

How to Write the Letters

Please use this first sheet as your example of how your child is expected to write their letters correctly. Please work with your child to write their letters touching the lines like you see below. The last couple of pages in this document could be printed as a practice sheet for your child.

Aa Bb Cc Dd Ee

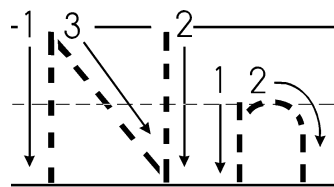
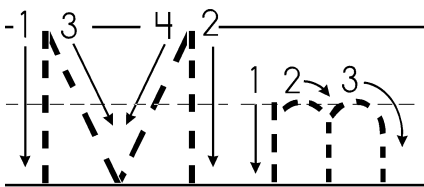
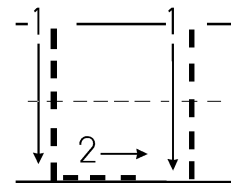
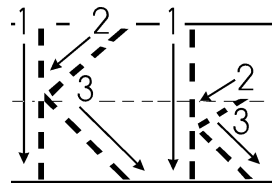
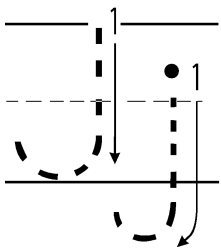
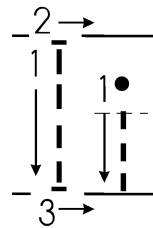
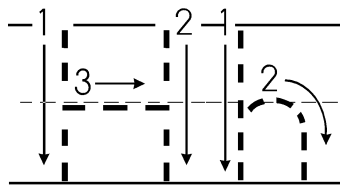
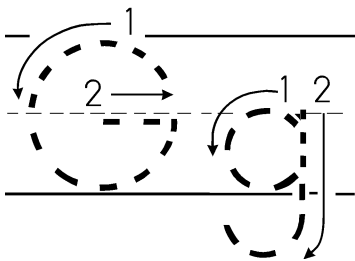
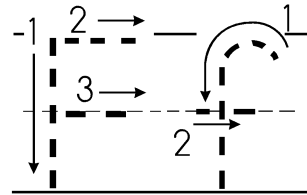
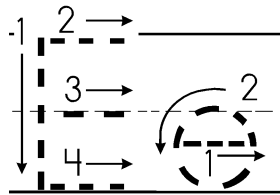
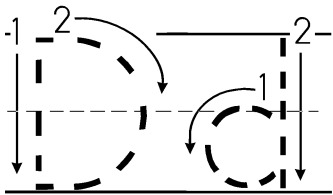
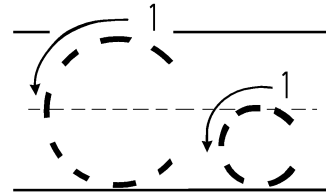
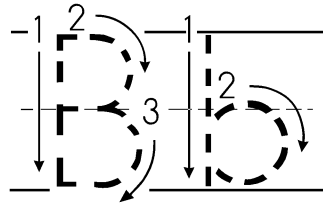
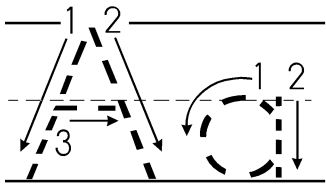
Ff Gg Hh Ii Jj Kk

Ll Mm Nn Oo Pp

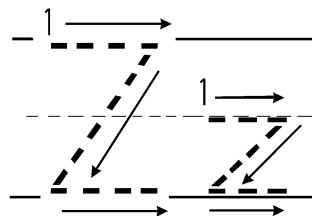
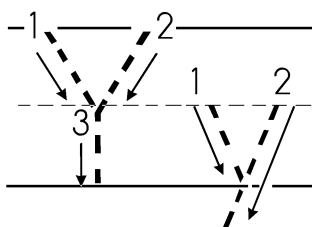
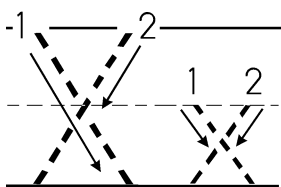
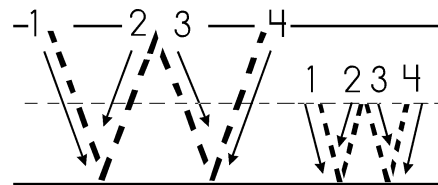
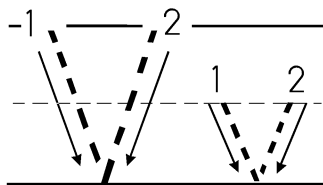
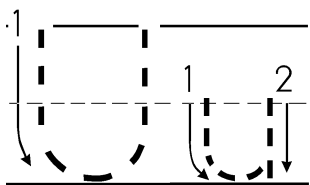
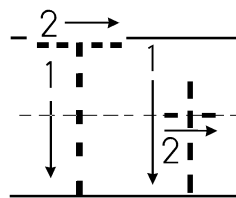
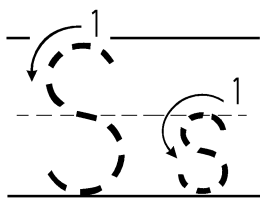
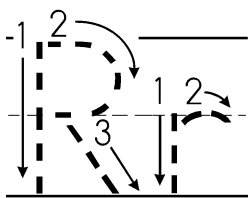
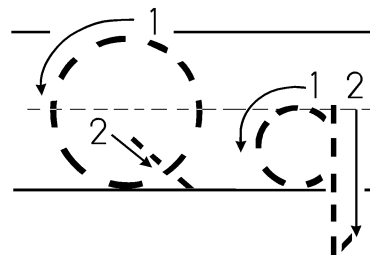
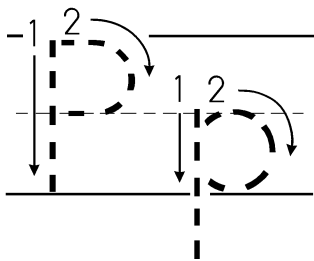
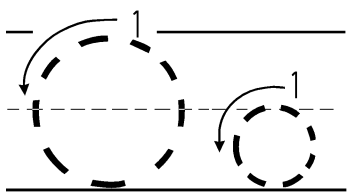
Qq Rr Ss Tt Uu

Vv Ww Xx Yy Zz

Please use these two pages as a practice sheet for your child to trace their letters appropriately.



Please use these two pages as a practice sheet for your child to trace the letters appropriately.



Please use this tracer page for any writing practice.

The page contains ten sets of horizontal lines for writing practice. Each set is composed of three lines: a solid top line, a dashed middle line, and a solid bottom line. These lines are spaced evenly down the page to provide a consistent guide for letter formation and alignment.